



REC# #: 752617  
 RECORDED 5/8/2019 AT 1:09 PM BK# 2620 PG# 1659  
 Debra K. Lee, CLERK OF LARAMIE COUNTY, WY PAGE 1 OF 1

# STATE OF WYOMING CORNER RECORD

(In compliance with the CORNER PERPETUATION AND FILING ACT, Wyoming Statutes, 1997 Section 33-29-140, et. seq., and the Rules and Regulations of the Board of Registrations for Professional Engineers and Professional Land Surveyors)

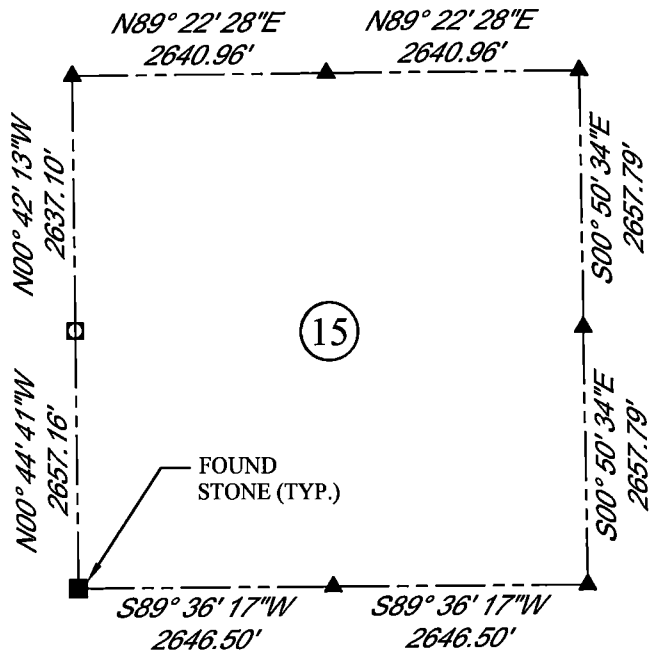
## SOUTH WEST CORNER SECTION 15, T. 18 N., R. 63 W., 6TH P.M., LARAMIE COUNTY, WYOMING

**GLO:** SET A SANDSTONE 16X12X4 10 IN. DEEP. MARKED WITH 3 NOTCHES ON S. SIDE AND 3 NOTCHES ON E. SIDE FOR COR. TO SECS. 15, 16, 21, 22.

**FOUND:** FOUND SANDSTONE APPROX 8X5X9 EAST SIDE OF N & S FENCE LINE. STONE WAS NOT SET.



SCALE: NONE  
 NORTH DETERMINED BY  
 G.P.S OBSERVATIONS



**LEGEND:**

- FOUND BLM CAP
- FOUND USFS CAP
- FOUND STONE
- FOUND PRIVATE MONUMENT
- ◆ CALCULATED POSITION
- ▲ SET MONUMENT (LS10245)
- SECTION LINE

DATE OF FIELD WORK: 08/20/2018 OFFICE REFERENCE: 746049 ----

**CROSS INDEX DIAGRAM**

A	1	2	3	4	5	6	7	8	9	10	11	12	13	14	15	16	17	18	19	20	21	22	23	24	25	A
B																										B
C		6				5				4					3						2					C
D																										D
E																										E
F																										F
G			7				8				9				10						11					G
H																										H
J																										J
K																										K
L																										L
M																										M
N																										N
O																										O
P																										P
Q																										Q
R																										R
S																										S
T																										T
U																										U
V																										V
W																										W
X																										X
Y																										Y
Z																										Z
	1	2	3	4	5	6	7	8	9	10	11	12	13	14	15	16	17	18	19	20	21	22	23	24	25	

WOOD  
 2615 AVIATION DRIVE  
 SHERIDAN, WY 82801  
 PH: 307-675-6400

THIS CORNER RECORD WAS  
 PREPARED BY ME OR UNDER  
 MY DIRECTION AND  
 SUPERVISION,  
 SEAL AND SIGNATURE

